



PICTOR⁺ PLUS
Portable Retinal Camera



 Improved Patient Care

 Portable

 Non-Mydriatic

 Multiple Modules

Making Portable **POSSIBLE**



The Pictor Plus portable retinal camera will take your practice places. From the exam room to on-location screenings, nursing home calls, and everywhere in between, the Pictor Plus is just as mobile as you are.



IMPROVED PATIENT CARE

The Pictor Plus provides first-class ophthalmic care. The high resolution imagery is very effective during initial screenings and follow-up treatments. Patient information can be directly entered into the handset for patient records.



MAXIMUM PORTABILITY

Weighing a mere 1 lb. (0.45kg), Pictor Plus is easily portable and highly effective in mobile situations. A proven success in the rapidly expanding telemedicine applications, Pictor Plus is especially versatile to examine patients where access may be difficult.



SIMPLE INTEGRATION

Featuring Wi-Fi connectivity, the Pictor Plus seamlessly integrates with any PC or mobile device to upload JPEG images to your patient database system. Pictor Plus is compatible with multiple image analysis and EMR software solutions and has DICOM compatibility.



PAYS FOR ITSELF

In as little as four months your practice can expect a return on the investment of the Pictor Plus device. Thereafter, it contributes to your revenue stream.

Shoot high resolution, detailed images in daylight or darkness. Weighing just one pound, the highly portable Pictor Plus camera moves with your practice making it possible to expand your services.

PERFECT Your Workflow

Break away from the desktop with the Pictor Plus, and bring your EMR with you. Pictor Workstation is the solution for managing patient images and information with wireless connection and DICOM support.

PRIMARY FUNCTIONS

- Set up and import worklists into the camera
- Use DICOM to create worklists and transfer images to a PACS or EMR
- Compare up to 9 simultaneous images displayed in the software
- Supported operating systems: Windows 7, Windows 8, & Windows 10

KEY BENEFITS

- Wirelessly automate image transfer from Pictor Plus via Wi-Fi or USB
- Seamless workflow from imaging to diagnosis
- Operate as a standalone system for efficient data viewing, analyzing and archiving
- Take advantage of complete tools for diagnostic purposes including zoom, lens and color filtering



“What I like the most about the Pictor Plus is that it is a non-contact system. Its great to have a truly portable device that you can pick up, put it in a bag or purse and take it anywhere. It is very convenient and flexible and can be adjusted to the position of a child so they don't have to be put at a table-top system or use a contact device.”

— **S. GRACE PRAKALAPAKORN, MD**

Pediatric Ophthalmologist and Strabismus Specialist

Two easily interchangeable modules provide high resolution retinal (non-mydriatic) or external eye imaging.

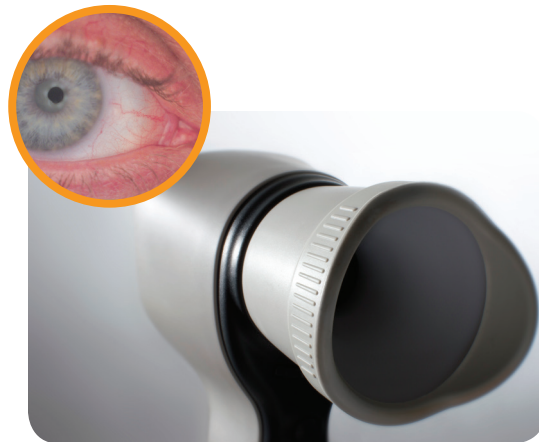


Retinal Module

RETINAL MODULE

Pictor Plus retinal imaging enables non-mydriatic fundus examination with a 40° field of view. With digital still and video images, the appearance of optic disc, macula and retinal vasculature can be screened and documented for ocular lesions and anomalies.

- 9 fixation points to target a variety of retinal images
- Reflection-free imaging with ten illumination levels
- Not necessary to dilate pupils (min. pupil size 3 mm)
- Produces color and red-free images for contrast
- Automatic and manual focusing
- Diopter compensation -20D to + 20D
- Slit lamp mount adapts Pictor to any slit lamp

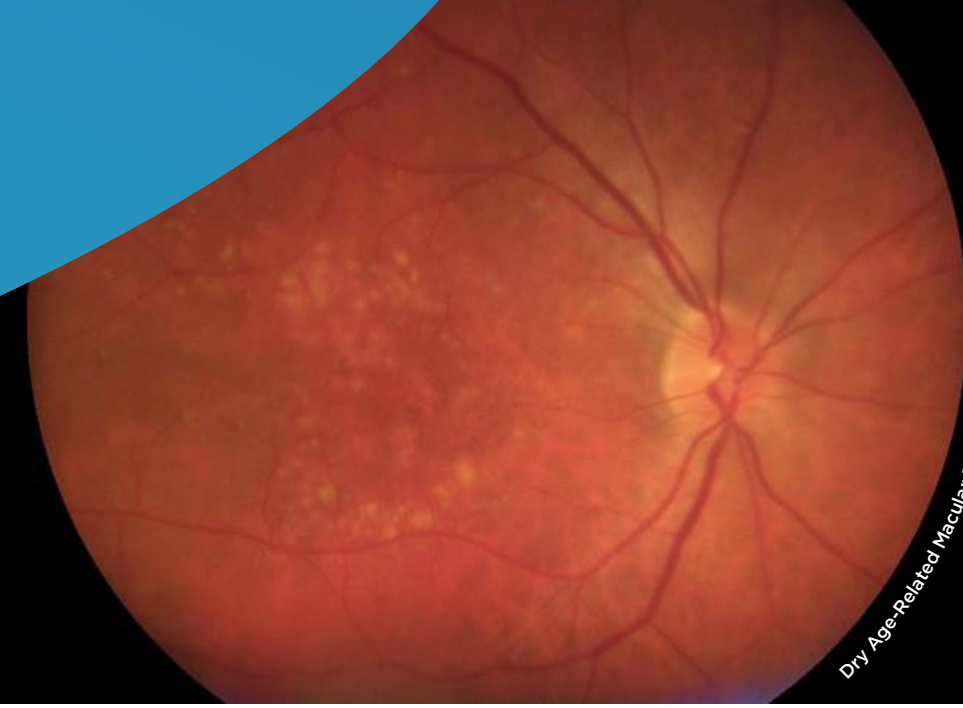


Anterior Module

ANTERIOR MODULE

Pictor Plus anterior imaging provides high resolution digital image data of the surface of the eye and areas directly surrounding the eye. The cobalt blue LED light allows fluorescent imaging to detect a dry eye or any cuts or rashes on the surface of the eye.

- White and blue LED light for image targeting and capture
- Autofocus and optional manual adjustment
- 6x digital zoom
- Image resolution 2560 x 1920 pixels



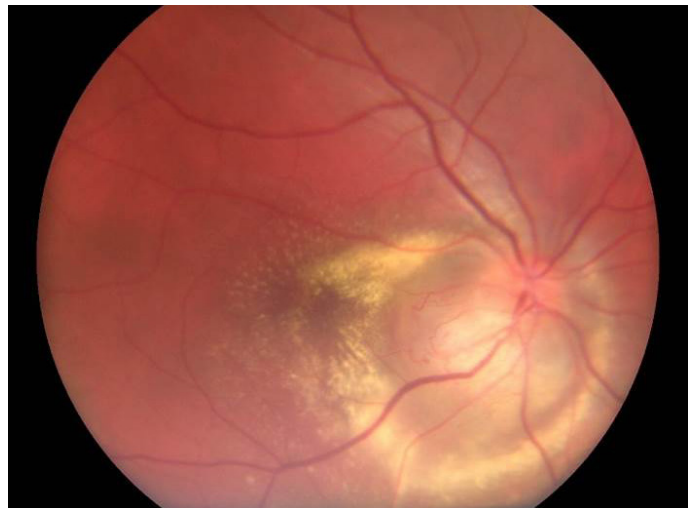
Dry Age-Related Macular Degeneration (AMD)

“The Pictor Plus has revolutionized my entire practice with my veterans and my patients with social security. Portability is essential for somebody like me that has offices in Dallas, El Paso, Houston, and San Antonio. Under 2016 ICD10 for retinopathy you must now document that a patient has a micro-aneurism. Only the Pictor Plus is going to be able to do that in your satellite office.”

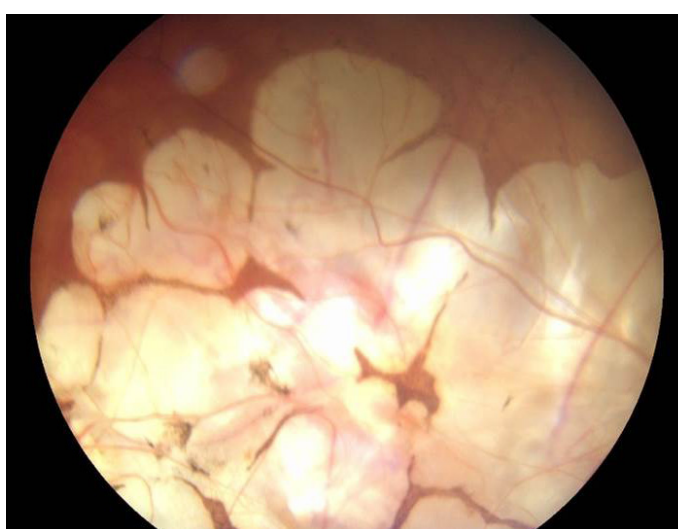
— **DAVID TASKER, MD**
Veteran's Association Network



Diabetic Retinopathy Circinate Exudates



Hamartoma of the Optic Nerve Head



Coloboma of Choroid



Conjunctival Trauma

Technical Specifications

Camera Sensor Resolution	5 Mega Pixel
Optical Resolution	> 60 linear pixels/mm
Focus Range	Autofocus, -20 to +20D
Minimum Pupil Size	3 mm
Image and Video Format	JPEG, DICOM, MPEG-4/MPEG-1
Display	2.4" TFT-LCD
Memory	4 GB SD card/2,000+ images
Power Supply	Rechargeable Ni-MH battery
Average Usage Time	3 hours continuous (2 batteries included)
Connectivity	Wi-Fi, USB
Type of Photography	Color, Red-Free, Infra Red
Dimensions	- Handset - 3.2" (w) x 6.5" (h) x 2.6" (d) (82 x 166 x 66 mm) - Retina module - 2.6" (w) x 2.8" (h) x 6.3" (d) (67 x 73 x 160) - Anterior module - 3.1" (dia) x 2.7" (d) (79 x 70)
Weight	- Handset - 0.8 lb (400g) - Retina Module - 0.6 lb (300g) - Anterior module - 0.2 lb (92g)

"I have been pleased with our Volk Pictor Plus camera, it has allowed our clinic to take images of pediatric, non-neurotypical and head-injury patients. I find that I can easily use the camera with a patient in the examination chair or their wheel chair. There is no need to place a patient in an uncomfortable position."

— JEN SIMONSON, OD

FCOVD Clinic Director of Boulder Valley Vision Therapy



Volk Optical Inc.
7893 Enterprise Dr., Mentor, OH 44060

www.volk.com
volk@volk.com

+1 (800) 345-8655 (Toll Free USA)
+1 (440) 942-6161