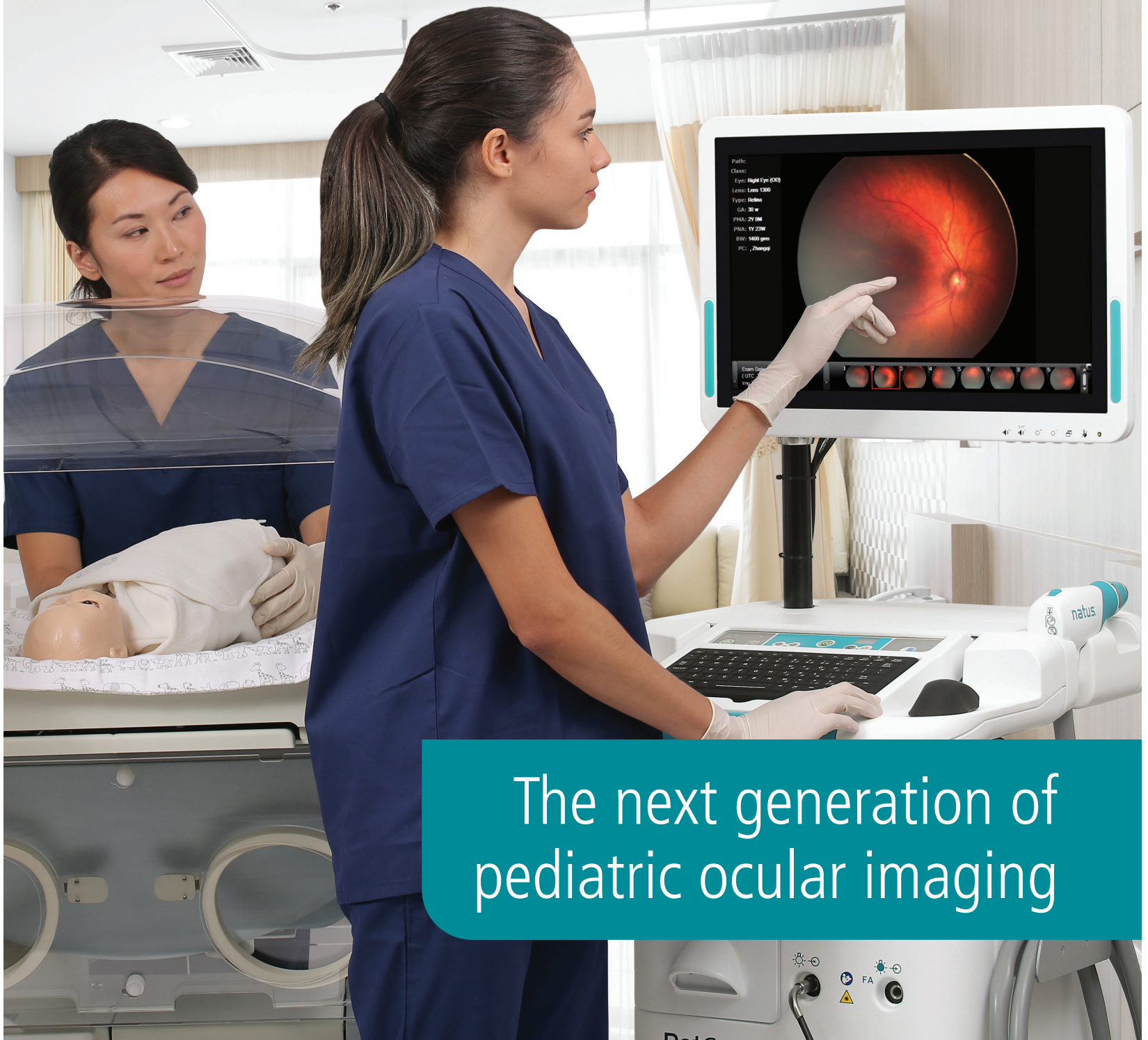


RetCam Envision™



The next generation of
pediatric ocular imaging

natus®

Illuminate the possibilities

The success of RetCam represented a huge leap in pediatric ocular imaging and set a new standard in the field. Now, Natus builds on that legacy of innovation and breaks new ground with RetCam Envision™, creating exciting new developments in image quality, connectivity and workflow efficiency. RetCam Envision represents our commitment to innovation that continually raises the bar and pushes us to develop new and better solutions for patients and the healthcare professionals that serve them.

Brilliant imaging

Lighting the way with confidence

Enhanced illumination and ultra-wide field of view make RetCam Envision the leader in image quality. These unique features result in images that provide a higher level of confidence for patient evaluations and consultations. Brilliant color images can be viewed in full-screen mode for maximum visualization of detail, enabling earlier detection of eye diseases and timely intervention.

Seamless connectivity

Collect, protect, and transfer data with ease

RetCam Envision provides seamless PACS integration and enhanced network capabilities. It's easier than ever to connect with worklists to exchange and synchronize data. Images are securely and centrally stored within PACS, significantly improving efficiency by reducing patient intake time and eliminating manual data transfer and long-term archiving.

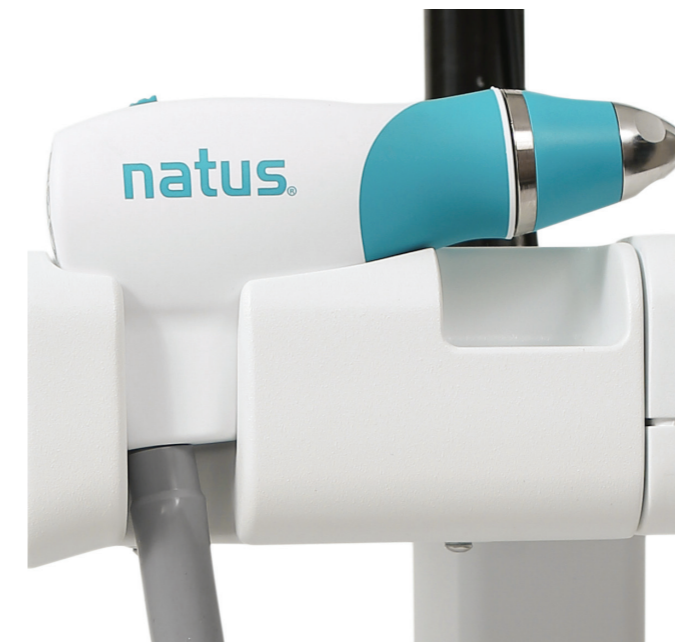
Optimal efficiency

Flexibility to focus on the patient

RetCam Envision is a perfect example of advanced technology meets practical application. It's easy to use and integrate into any NICU environment, giving NICU staff more control over the screening process, including the ability to schedule exams based on their knowledge of the patient's status.

RetCam Envision Features and Benefits

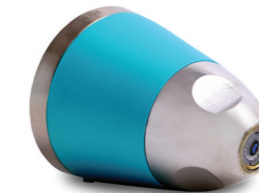
- A. Intuitive 24" touchscreen provides ease-of-use and improved workflow
- B. New handpiece includes FA barrier filter for quick engagement of FA
- C. Height-adjustable cart ensures proper positioning and comfort for the operator
- D. Optional DICOM workflow for seamless integration



Convenient cleaning with removable lenses

Detachable 130° lens, and optional portrait lens, can be easily removed for cleaning and disinfection.

- Minimize downtime by disinfecting a lens while another is in use
- Increase your confidence knowing that lenses can be disinfected with validated protocols



Detachable 130° lens



Detachable portrait lens (optional)

Leading the field in innovation

RetCam Envision's innovative Light Shaping Technology provides uniform illumination for luminous detail in captured images.

- Provides uniform illumination and focus across the entire 130° field of view
- Enhanced visualization of darkly pigmented retinas
- Improved peripheral detail with Light Shaping Technology





Fluorescein angiography helps deliver essential information you need

RetCam Envision's fluorescein angiography (FA) option is a diagnostic aid to examine the circulation of the retinal blood vessels and assist with the detection of anatomical abnormalities. It provides users with the ability to visualize the absence or presence of blood flow within the eye. FA software exam screen information display includes timer, frame number and frame rate.

Benefits of FA

- Helps to examine the perfusion of the retinal blood vessels
- Provides sharp visualization of leaking vessel defects and neovascularization in ROP
- Documents and supports the diagnosis of many pediatric ophthalmic diseases and conditions

Capturing the eyes of the world

Improving patient care starts here

The **Vision Care Academy (VCA)** provides access to educational programs and resources designed to enrich product expertise and clinical knowledge. This includes resources such as the **ROP Toolkit**, and continued growth through a network of industry experts in the field.



Join the Vision Care Academy for clinical resources, learning opportunities and more!
vision-care.academy

"What I liked best about the RetCam Workshop was the incredible variety of strategies that are modeled, the community that developed with all members, and the incredible learning process of working through various clinical cases. It was an amazing learning experience."

Marius Müller
Clinical Specialist

Joining is **FREE** plus members gain exclusive access to the **ROP Toolkit** and these resources:

- | | |
|---|--|
|  Newsletters |  eSeminars |
|  Educational Videos |  "Ask the Expert" Forum |
|  Application—Tips & Tricks |  Social Networking |

Learn more and request a demo at
natus.com/envision

*NOTE: RetCam Envision is not available for sale in the USA.

Healthcare solutions with one thing in mind. You.

©2020 Natus Medical Incorporated. All Rights Reserved. All product names appearing on this document are trademarks or registered trademarks owned, licensed to, promoted or distributed by Natus Medical Incorporated, its subsidiaries or affiliates. 033370 RevB

natus
Natus Medical Incorporated
natus.com