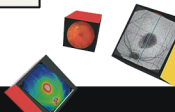


Your Name

Referred By



The background features several 3D rectangular boxes of various colors (red, yellow, purple, grey) arranged in a circular pattern. Each box contains a different type of OCT scan image: a fundus photograph, a cross-sectional B-scan, a color-coded thickness map, and a 3D volume rendering of the retina.

Eye Care To Share

My OCT Health Check experience